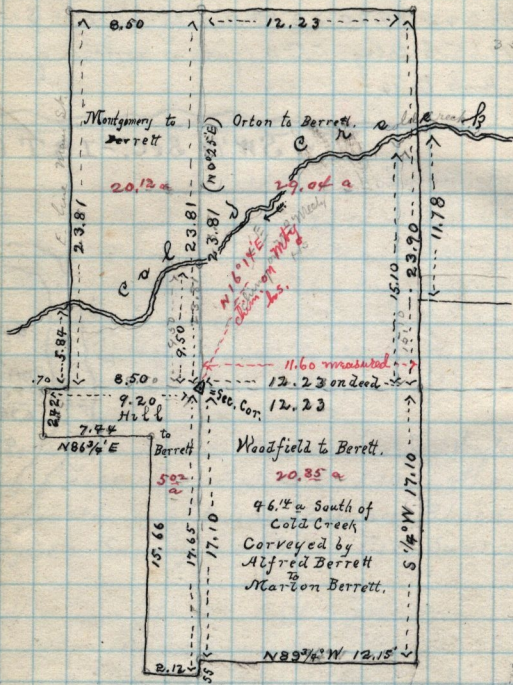


132

November 16-1887.

Plats of lands owned by Alfred Berrett.

N. S. E. 1/4 Sec 32 - & S. W. 1/4 Sec 33 - T. 7 N. R. 1 W. also N. E. 1/4 Sec 5 & N. W. 1/4 Sec 4 T. 6 N. R. 1 W.



Marion Berrett.

S 45° 1' W
East galle
Woodfield

Clay Rental
S 64° 34' E
- along - See Cor.